



WWW.TORQLITE.COM

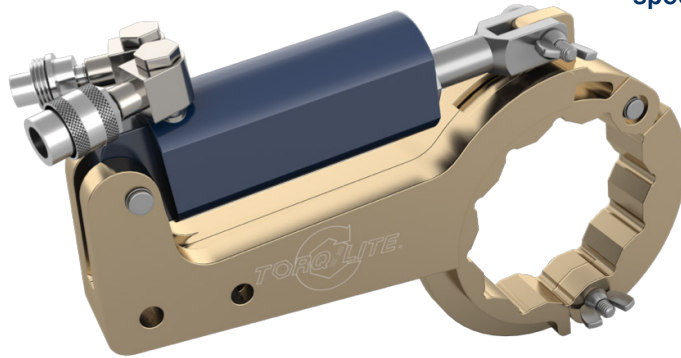
8 DUFRESNE LOOP LULING, LA 70070  
(985) 785-3075

11050 W LITTLE YORK BLDG. I HOUSTON, TX 77041  
(713) 983-7171

ISO 9001 REGISTERED

## JN SERIES

HYDRAULIC WRENCH



Our patented JN Series hydraulic wrench is designed specifically for fast, safe and accurate tightening or loosening of Top Drive Packing Nuts and Gas Compressor Piston Rod Crosshead Jam Nuts. However, with use of one of our innovative, in-house specialty adapters/inserts, the wrench can be used to turn any nut that faces the problem of having a shaft, rod or tube running through its center. The Torq/Lite JN Series hydraulic wrench features a patented "split-head" design, enabling the tool to fit over the wash pipe or piston rod and around your packing nut or jam nut. Our standard JN Series wrench capacity ranges from 100 to 32,000 foot pounds of torque using a standard bi-directional 10,000 p.s.i. hydraulic pump.

### PATENTED "SPLIT-HEAD" DESIGN

The "split-head" itself, or through use of a special made adapter/insert, can fit any size or type of Top Drive Packing Nut, OEM Jam Nut, hex or any other configuration. This eliminates the need for expensive after-market nuts while also giving you never before seen accuracy, speed and safety.

### FAST

The patented "split-head" design can be placed around the wash pipe, piston rod or any other type of shaft, rod, pipe or tube and on the nut or adapter/insert in less than one minute. Accurate tightening or loosening of the jam nut is easily achieved in just a few seconds.

### SAFE

The JN Series hydraulic wrench eliminates unsafe hammer wrenches, hydraulic jacks or cranes, and other unsafe equipment currently being used to turn these nuts.

### ACCURATE

This fast hydraulic wrench, designed specifically to deal with Top Drive Packing Nuts and Crosshead Jam Nuts, provides accuracy to  $\pm 0.03$  with the use of a standard bi-directional 10,000 p.s.i. hydraulic pump.

### FUNCTIONAL

The JN Series hydraulic wrench will work equally well in either Top Drive wash pipe assemblies or compressor cross-head access ports. It will work right-side up, upside-down, sideways, etc. for both loosening and tightening.

### REACTION PAD

Reacts against either the Top Drive bonnet window opening or the compressor crosshead structure.

### COATED

All exposed parts to resist corrosion and galling.

### 360° SWIVEL FITTINGS (PATENTED)

Allow hose movement without hose binding. Nickel-plated steel with fewer moving parts.

### LIGHT/ERGONOMIC

Reduces operator fatigue. Tool can also be used with an overhead spring balancer, which allows you to set the tool weight as light as one pound.

### CALIBRATED

Every tool is tested and calibrated to  $\pm 0.03$  accuracy and  $\pm 0.01$  repeatability traceable to N.I.S.T.



WWW.TORQLITE.COM

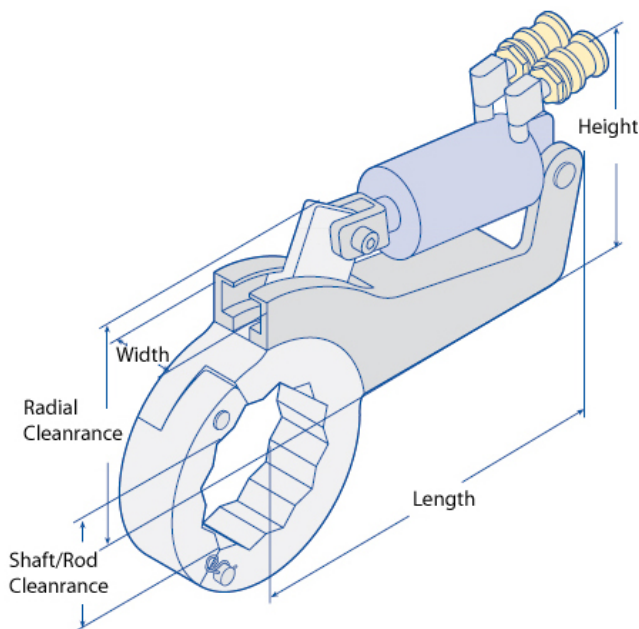
8 DUFRESNE LOOP LULING, LA 70070  
(985) 785-3075

11050 W LITTLE YORK BLDG. I HOUSTON, TX 77041  
(713) 983-7171

ISO 9001 REGISTERED

## JN SERIES

### HYDRAULIC WRENCH

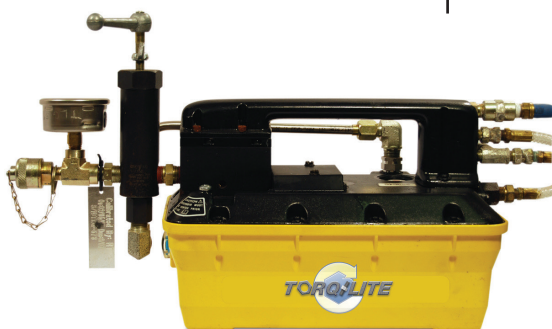


JN SERIES	MAX FT. LBS. @ 10,000 PSI	LENGTH	HEIGHT	WIDTH	RADIAL CLEARANCE	"SPLIT HEAD" RANGE	WEIGHT WITH HEAD
JN-4	3,650	13.044"	7.014"	1.950"	5.000"	2" - 4 <sup>5</sup> / <sub>8</sub> "	28 lbs.
JN-10	8,400	10.659"	7.014"	1.950"	5.000"	3 <sup>3</sup> / <sub>8</sub> " - 4 <sup>5</sup> / <sub>8</sub> "	28 lbs.
JN-20	20,100	14.056"	9.117"	1.950"	7.372"	4 <sup>5</sup> / <sub>8</sub> " - 6"	40 lbs.
JN-30	32,000	16.000"	10.446"	1.950"	8.825"	6" - 8 <sup>1</sup> / <sub>4</sub> "	57 lbs.
JN-40	38,396	19.126"	12.500"	2.950"	10.070"	4 <sup>5</sup> / <sub>8</sub> " - 10"	105 lbs.

**THIS TOOL IS APPROVED FOR EXPLOSIVE ENVIRONMENTS.**

## JNAHC-10

### TURBO AIR/HYDRAULIC PUMP



RESERVOIR CAPACITY	150 cubic inches
FLOW RATED PRESSURE	8 cubic inches/minute
AIR PRESSURE RANGE	40 - 100 psi
AIR CONSUMPTION	12 scfm
MAXIMUM OPERATING PRESSURE	10,000 psi
BUTTON PENDANT	Controls hydraulic advance/extend and air retract/return